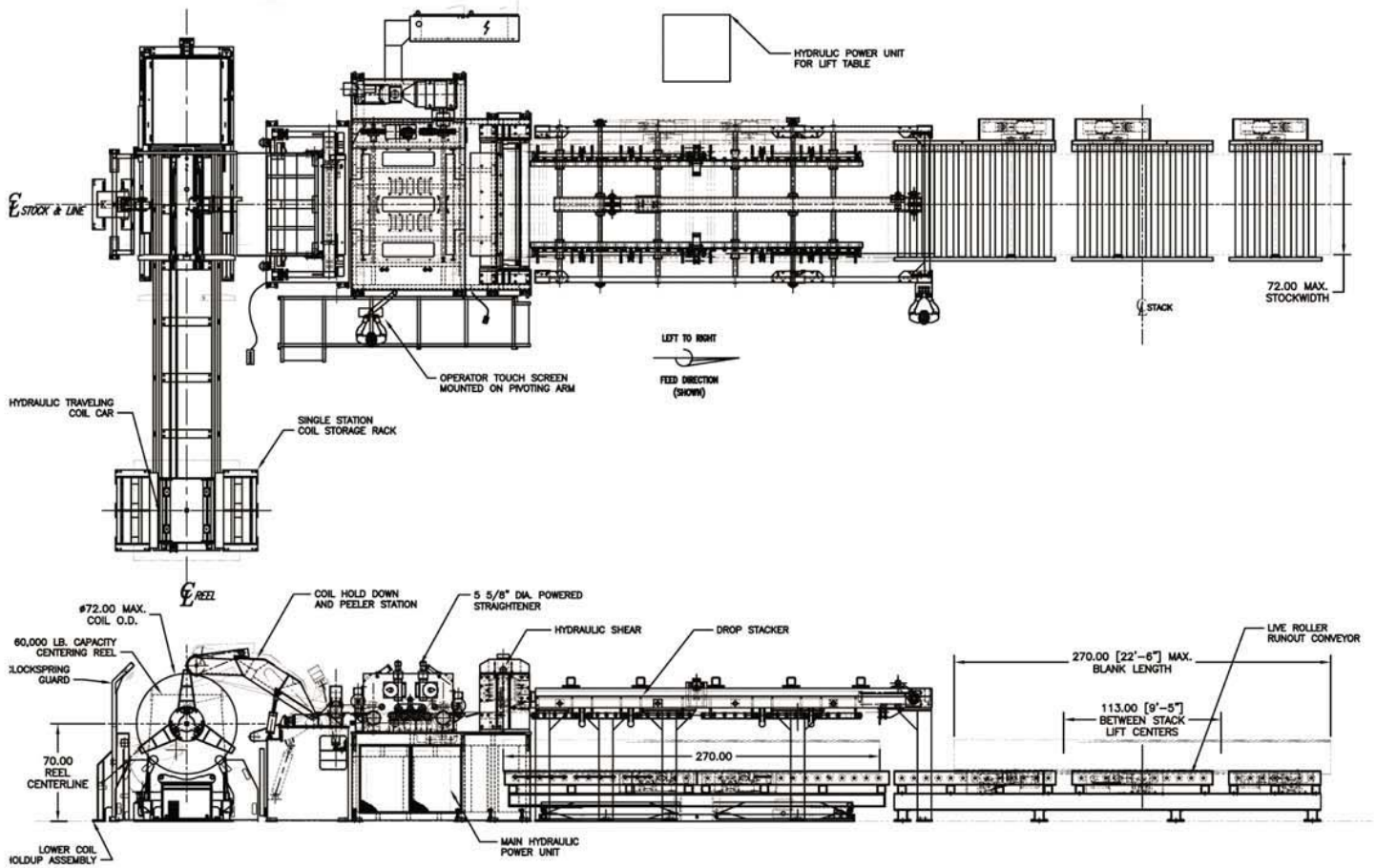
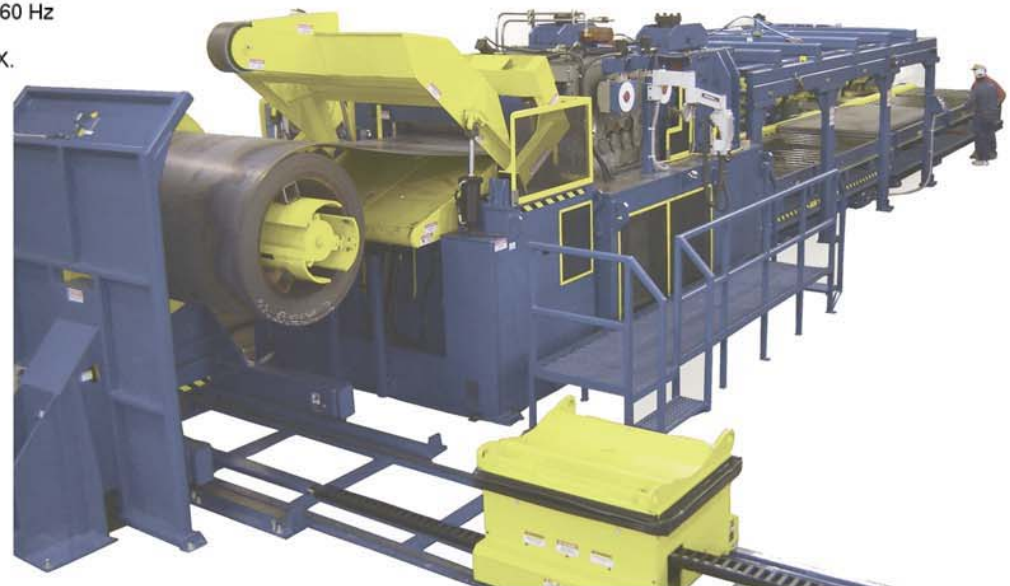


Cut-to-Length Line - Storage Tank OEM



SPECIFICATIONS

COIL WEIGHT	60,000# Max
COIL WIDTH	36" TO 72"
COIL I.D.	19.25" TO 24.75"
COIL O.D.	30" TO 72" MAX.
MATERIAL BEING RUN	MCRS & SS
MATERIAL THICKNESS060" - .375" MCRS
MATERIAL THICKNESS060" - .187" SS
FEED LENGTH RANGE	96" TO 270"
LINE SPEED	60 FPM
PASSLINE HEIGHT	78"
MAX. BLANK SIZE	72" X 270"
MIN. BLANK SIZE	36" X 96"
LINE VOLTAGE	460V., 3PH., 60 Hz
STACK HEIGHT	12" TO 25"
STACK WEIGHT	60,000# MAX.



Heavy Gauge CTL Line
with Drop Stacker